



Cholmley Gardens, Fortune Green Road, West Hampstead, London NW6
Subject To Contract £1,175,000 | Leasehold - Share of Freehold

Contact us about this property

337 West End Lane, West Hampstead, London, NW6 1RS

E: nw6@alexanders-uk.com

T: 0207 431 0666

www.alexanders-uk.com

Alexanders

Property Consultants



About This Property

Rarely available, is this fabulous four-bedroom flat, situated on the first floor of one of West Hampstead's premier blocks, with access to fantastic communal gardens and tennis courts. This is very much a family orientated block with its convenience to schools and the safety of a gated garden and children's play area.

Built between 1922 and 1929, the building is extremely well managed and cared for in a most exacting way and the flat retains many original features.

The property at approx 1779sqft, comprises of 3 large double bedrooms (one currently used as a large office space) a smaller fourth double, separate kitchen and large living room. The flat is extremely bright and light, with high ceilings and generous proportions.

The block is in the heart of a busy and vibrant West Hampstead, with easy access to more open space just a few minutes' walk to Fortune Green and a lovely walk through to Hampstead and Hampstead Heath.





The flat is within 5 minutes walking distance of the local shops, restaurants, and bars of West End Lane.

The transport in West Hampstead is second to none, with the Jubilee Line, Thameslink, and Overground Station all within a 5-to-ten-minute walk of the property.

For further information or to book an appointment call on 020 74310666.

Alexanders

Property Consultants

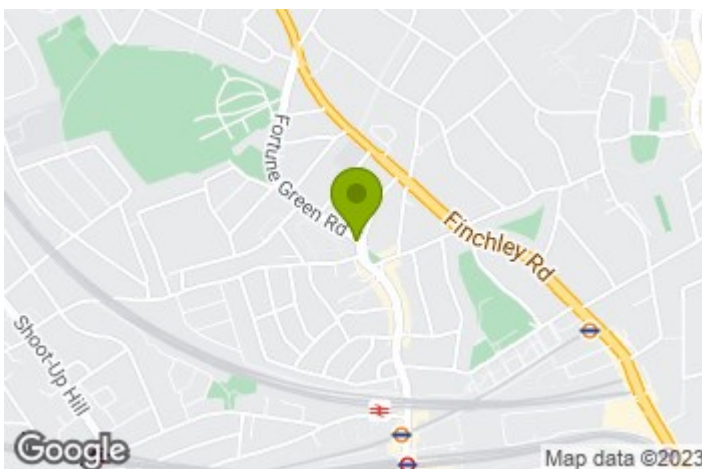
 4 Bedroom |  1 Reception |  2 Bathroom |  69 C

Property Features

- 4 Double Bedrooms
- 2 Bathrooms
- Communal Gardens
- Tennis Courts
- 5 Mins walk to Thameslink station
- 7 mins walk to London Overground
- 8 mins walk to London Underground

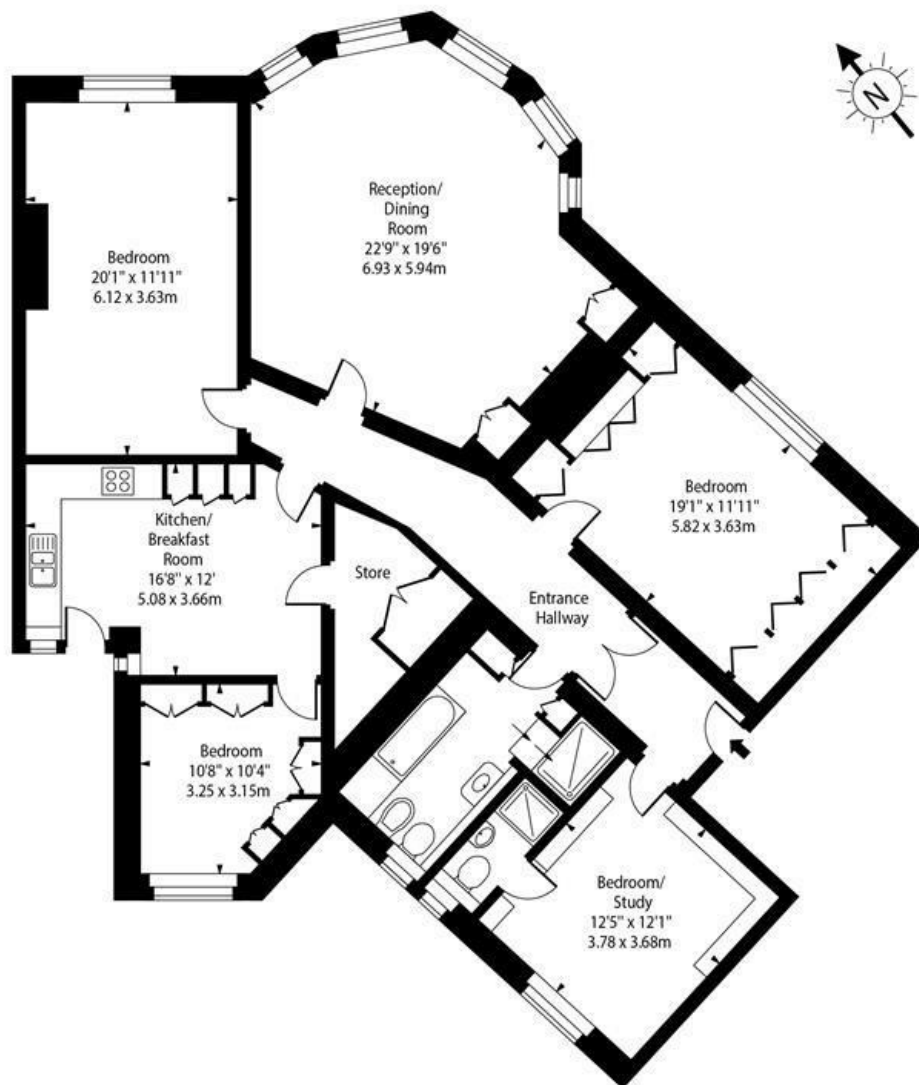
Property Size

1779.00 sq ft



Nearest Transport Links

Cholmley Gardens, West Hampstead, NW6



First Floor

Approx Gross Internal Area 1779 Sq Ft - 164.18 Sq M

For Illustration Purposes Only - Not To Scale Floor Plan by www.nogaphotostudio.com Ref: No.46223

This floor plan should be used as a general outline for guidance only. Any intending purchaser or lessee should satisfy themselves by inspection, searches, enquiries and full survey as to the correctness of each statement. Any areas, measurements or distances quoted are approximate and should not be used to value a property or be the basis of any sale or let.

Contact us about this property

337 West End Lane, West Hampstead, London, NW6 1RS

E: nw6@alexanders-uk.com

T: 0207 431 0666

www.alexanders-uk.com